

CIE Seattle Overview

About CIE Seattle

<http://www.cie-sea.org/>



CIE Seattle promotes excellence in professional and academic communities through programs advancing innovation, collaboration and education:

Recognizing and Promoting Excellence

- "Seattle Luminary Award" recognizing global impact of local leaders
- Asian Pacific American Youth Scholarship Program

Supporting Collaboration and Professional Development

- Professional Development Seminar Series
- Annual CIE Seattle Convention and Seminar Series
- Technical Professionals Summer Social

Enriching Education

- Student and Young Professionals Mentoring Program
- Asian Pacific American Youth Math and Science Contest
- "Bridging the Gap" University and College Lecture Series

Founded in 1961, CIE Seattle ("Chinese Institute of Engineers – Seattle") is 501(c)(3) non-profit and a member of the CIE/USA National Council, which serves 10,000 CIE members and alumni nationwide

Seattle Luminary Award

The **Seattle Luminary Award** recognizes the impact of an outstanding local professional in the international community. The 2007 award was presented to Dr. Harry Shum, Corporate Vice-President of Microsoft Research who has been a distinguished role model in our community.



Above: CIE Seattle President Michael Chang (left) presents Seattle Luminary Award to Dr. Harry Shum (right)

Dr. Harry Shum, Corporate Vice-President Microsoft Research *2007 Seattle Luminary Award Honoree*

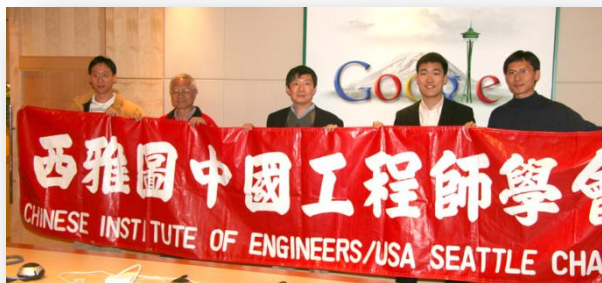
Dr. Harry Shum oversees the research activities at Microsoft Research Asia and the lab's collaborations with universities in Asia Pacific. Recently, Dr. Shum has taken the additional responsibility of driving the long-term and short-term technology investments in search and advertising at Microsoft.

Dr. Shum is an Institute of Electrical and Electronics Engineers (IEEE) Fellow and an American Computational Machinery (ACM) Fellow. He serves on the editorial board of the International Journal of Computer Vision, and is a Program Chair of the International Conference of Computer Vision (ICCV) 2007. Dr. Shum has published more than 100 papers in computer vision, computer graphics, pattern recognition, statistical learning, and robotics. He holds more than 50 U.S. patents.

Dr. Shum received a doctorate in robotics from the School of Computer Science at Carnegie Mellon University in Pittsburgh, PA. In his spare time, he enjoys playing basketball, rooting for the Pittsburgh Steelers, and spending quality time with his family.

Professional Development Seminar Series

Opportunities for learning from distinguished local professionals are supported by the CIE Seattle Professional Development Seminar Series. Topics range from financing new businesses, to cross-cultural leadership, to understanding recent innovations in renewable energy



Speakers for the 2007 CIE/USA Seattle Professional Seminar Series include:

John Clyman, Co-founder of SiteScout, former Editor at PC Magazine,

John Clyman has over 15 years of experience evaluating innovations on behalf of publications, venture capital firms and leading technology companies. His new company, SiteScout, aims to make the web safer through the automated identification of malicious websites.

Dr. Elaine Chan, Financial Advisor, Merrill Lynch

Dr. Elaine Chan received her Ph.D. in Economics from Cornell University and is a frequent speaker on the financial services industry. Her past professional experiences include service at the World Bank, General Motors, Nextel Communications and Cendant Corporation.

Dr. Lewis M. Fraas, Scientist, Author and Entrepreneur - Dr. Fraas has over 25 years of experience at Hughes Research Labs, Chevron Research Co., and the Boeing High Technology Center working with advanced solar cells. He has authored over 100 publications, holds over 40 patents and is an Affiliate Professor in Materials Science at the University of Washington.

Chee Chew, Engineering Director, Google - Chee joined Google in 2007 where he is an Engineering Director in the Kirkland office, responsible for client efforts in Kirkland and Kirkland-China projects. Before Google, Chee was a General Manager at Microsoft in charge of Games for Windows LIVE, prior he was the General Manager for Windows Mobile.

Youth Math and Science Program

In collaboration with Puget Sound Area Chinese Schools, IBM Corporation and Nintendo, each year the CIE/USA - Seattle holds a youth contest for students grades 3 to 8 to recognize and promote excellence in math and science.



The objective of the CIE/USA – Seattle math and science contests programs is to promote achievement in the fields of science, engineering, technology and education among the Asian Pacific American community.

MathComp is an annual math competition for students from 3rd to 8th grade where no calculators are allowed. The program is held in conjunction with ScienceFun, a 60-minute paper airplane construction competition where students compete for airplane flying distance and target accuracy. Through a lecture at the beginning of the program, students learn four forces of aerodynamics for flying and how to design and create different paper airplanes.

Partner Organizations include: Bremerton Chinese School, Chong Wa Chinese School, Episcopal Chinese School, Evergreen Chinese School, Seattle Chinese School, South Puget Sound Chinese Language School, Washington Chinese School, Northwest Chinese School

Youth Scholarship Program

CIE Seattle provides annual scholarships to youth demonstrating outstanding potential in their academic and community achievements. Recipients are honored at the CIE Seattle Annual Convention with both an award and monetary scholarships.



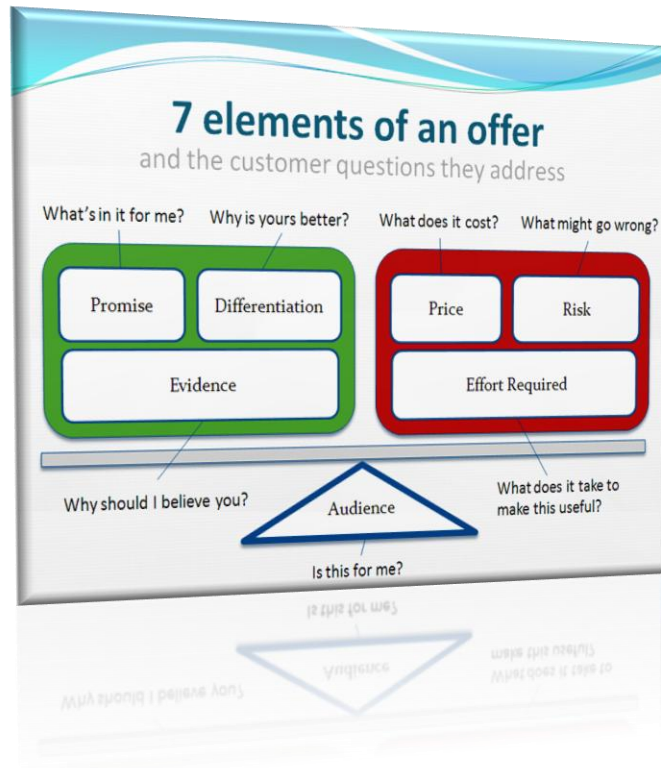
This event was made possible in part from the generous support of:

"Bridging the Gap" University and College Lecture Series

The "Bridging the Gap" lecture series was created to bring industry professionals to university and college campuses to share perspectives on professional development and leadership relevant to their future success.

Programs have included technology discussions, introductions to professional product development and product management, and general career development lectures.

The program's success spans college campuses in the United States, Canada, China and Japan



CIE Seattle Board of Directors and Officers

Ta-Win Lin, Ph.D.

Board Chairperson ('08-'09); Director ('07-'09)

Senior Economist at Washington State Office of Financial Management; past president of CIE Seattle

Ian Tien

President ('08-'09); Director ('07-'09)

Senior Product Manager at Microsoft Corporation; past vice president of CIE Seattle; past board member of Canada-America Society

Kai Wang, Ph.D.

Vice President ('08-'09); Director ('07-'09)

Chief Technology Officer of Taiwan Genome Sciences; cofounder of PhenoGenomics; former senior scientist at Celltech Inc., with over 40 original research papers and patent filings.

Robert Wang, Ph.D.

Treasurer ('08-'10); Director ('07-'09)

Senior Software Design Engineer at Microsoft Corporation; former principal engineer, Boeing Corporation; former chief engineer, HomeMeeting

Michael Chang

Secretary ('08-'09), Director ('08-'10)

Senior Lead and International Project Manager, Microsoft Corporation; past president CIE Seattle; former design engineer at Novell, WordPerfect Corporation, 3M

James Shih-Jong Lee, Ph.D.

National Council Communications Chair ('08-'10), Director ('07-'09)

President of SVision LLC; former CTO of NeoPath, Inc., author of 80+ publications; inventor on 66 issues & 20 pending US patents; former Washington Technology Center board member

Hsiung-Fei Lee

Professional Development Chair ('08-'10); Director ('08-'10)

Former president, VP operations of AeroVision Avionics; former Sales Director, Engineering Manager at Boeing Commercial Airplane Co.; past president of CIE Seattle

Jiin Chen, Ph.D.

Education Chair ('08-'10); Director ('08-'10)

Former Executive Chair of Asian American Engineering of the Year Awards; past president of Boeing Asian American Professionals Association; past CIE/USA National Council Advisor

David Wei

Membership & Communications Chair ('08-'10); Director ('07-'09)

Past CIE Seattle Vice President; former IT Manager at Triple B Corporation; alumnus of Santa Clara University, University of Illinois at Champagne-Urbana & National Taiwan University

Jack Peng

Advisory Board Chair ('08-'10)

Former Boeing Engineer in Network Performance; alumnus of Carnegie Mellon University; member of CMG (Computer Measurement Group), principal co-founder of OCA (Organization of Chinese American) GS (Greater Seattle) chapter; Executive VP of CAF (Chinese American Forum).

Shiang-Yu Lee, Ph.D.

Director ('07-'09)

Senior Member of the American Institute of Aeronautics and Astronautics (AIAA); retired Information Systems Architecture, Boeing Corporation; board member of National Taiwan University Alumni Association – Northwest Chapter, Society of Chinese American Aerospace Engineers Seattle Chapter and Seattle Zhen-He Society

Yang Xiao, Ph.D.

Director ('07-'09)

Software Design Engineer in Test, Microsoft Corporation; alumnus of Arizona State University and past president of ASU's Chinese Student and Scholar Friendship Association & past vice of ASU Toastmaster Club

Eric Chen

Director ('08-'10)

Manager, FKC Land LLC; past CIE Seattle Treasurer; former Application Software and System Engineer at Northwestern University

George Chang

Director ('08-'10)

Project Manager, Foxconn; past CIE Seattle Officer; alumnus of University of Texas at Austin and National Tsing Hua University in Taiwan

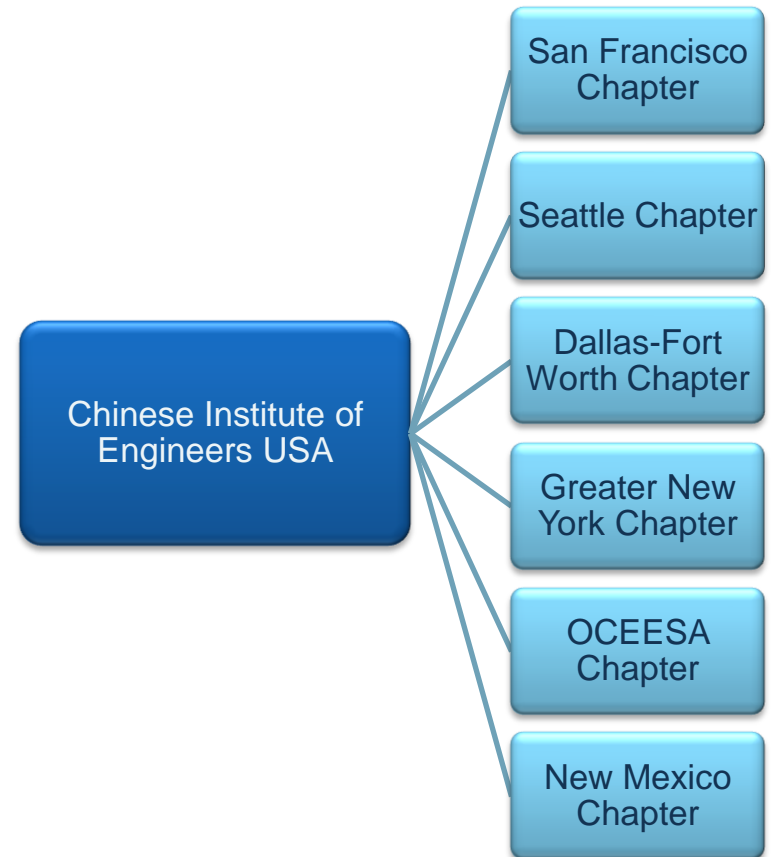


CIE Seattle is a member of the CIE/USA ("Chinese Institute of Engineers USA National Council"). Founded in 1917, CIE/USA serves 10,000 members and alumni today.

Composed of six regional chapters, CIE/USA hosts the annual **Asian American Engineer of the Year Award**, as well as marquee international conferences in China, Hong Kong and Taiwan.

Mission of the CIE/USA:

- 1) Promote excellence in engineering, science and technology
- 2) Facilitate collaboration among engineering and scientific organizations
- 3) Support professional, educational and cultural services for communities



CIE/USA: Asian American Engineer of the Year Award

In 2006, Seattle hosted over 2000 attendees for the Asian American Engineer of the Year Award ceremony. The awards have honored outstanding leaders, including four Nobel Laureates, from the world's top technology organizations.



Honorees for the 2006 Awards hosted by CIE Seattle include:

Honorary Chair:

Gary Locke,

Former Governor for the State of Washington

Keynote:

James A. Young

Vice-President, Boeing Integrated Defense Systems

Honorees include:

Dr. Yuan Tseh Lee (1986 Nobel Laureate)

President, Academia Sinica, Taiwan

Dr. Ya-Qin Zhang

Corporate Vice President, Microsoft Corporation

Dr. Albert Y.C. Yu,

Former Senior Vice-President, Intel Corporation

Dr. Wen H. Chen

Fellow, Cisco Corporation

Dr. Richard C. Chu

Fellow, IBM Corporation

Corporate Sponsors included:

IBM, Cisco, Boeing, Northrop Grumman, Lockheed Martin, Microsoft, BP, Intel, GM, Texas Instruments, and Sprint



CIE/USA: International Conferences

To promote international collaboration, the CIE/USA partners with organizations across the Greater China Region to host technical conferences for American and Chinese communities to share research, insights and professional best practices.



CIE/USA International Conferences Include:

Sino-American Technology and Engineering Conference (SATEC)

First held in 1993, this bi-annual conference is organized in collaboration with the People's Republic of China and will be held in fall 2008.

Modern Engineering and Technology Seminar (METS)

In collaboration with the Taiwan national government, this bi-annual technology conference was founded in 1966 between the CIE-NY and CIE-ROC chapters. Its next event takes place in 2009.



Forum for HK Technology and Engineering Development (HKTED)

Founded in 2006, this bi-annual conference is held in collaboration with the government of Hong Kong and will be held in 2009.



On a regular basis, CIE Seattle membership are invited to speak at the international conferences and CIE-related events

Join CIE Seattle Today

CIE Seattle provides services to American and Asian professional and student communities. Diversity is highly encouraged and no technical or cultural background is expected for membership.

Membership	Benefits	Membership Dues
12-month Professional Membership	<ul style="list-style-type: none">• Networking opportunities with professionals, community leaders and CIE Seattle alliance organizations• Professional development and mentorship opportunities with senior leaders• Invitations to educational, professional, technical, social and cultural events• Discounted activities fees (up to 60%)	Only \$15 until December 31, 2008, price to increase to \$25 in 2009
Lifetime Professional Membership	<ul style="list-style-type: none">• All benefits of the Professional Membership• Save time and money on renewals (48% of membership have been with CIE 5+ years)	Only \$100 until December 31, 2008, price to increase to \$150 in 2009
12-month Student Membership	<ul style="list-style-type: none">• Includes Professional Membership benefits, limited to students currently enrolled in college or university programs	Only \$5 until December 31, 2008, price to increase to \$10 in 2009

A membership package will be sent to the email address identified in your membership due payment. CIE Seattle accepts cash, check, PayPal and all major credit cards

To join, visit <http://cie-sea.org> and go to "Contact Us" -> "Join Membership"